

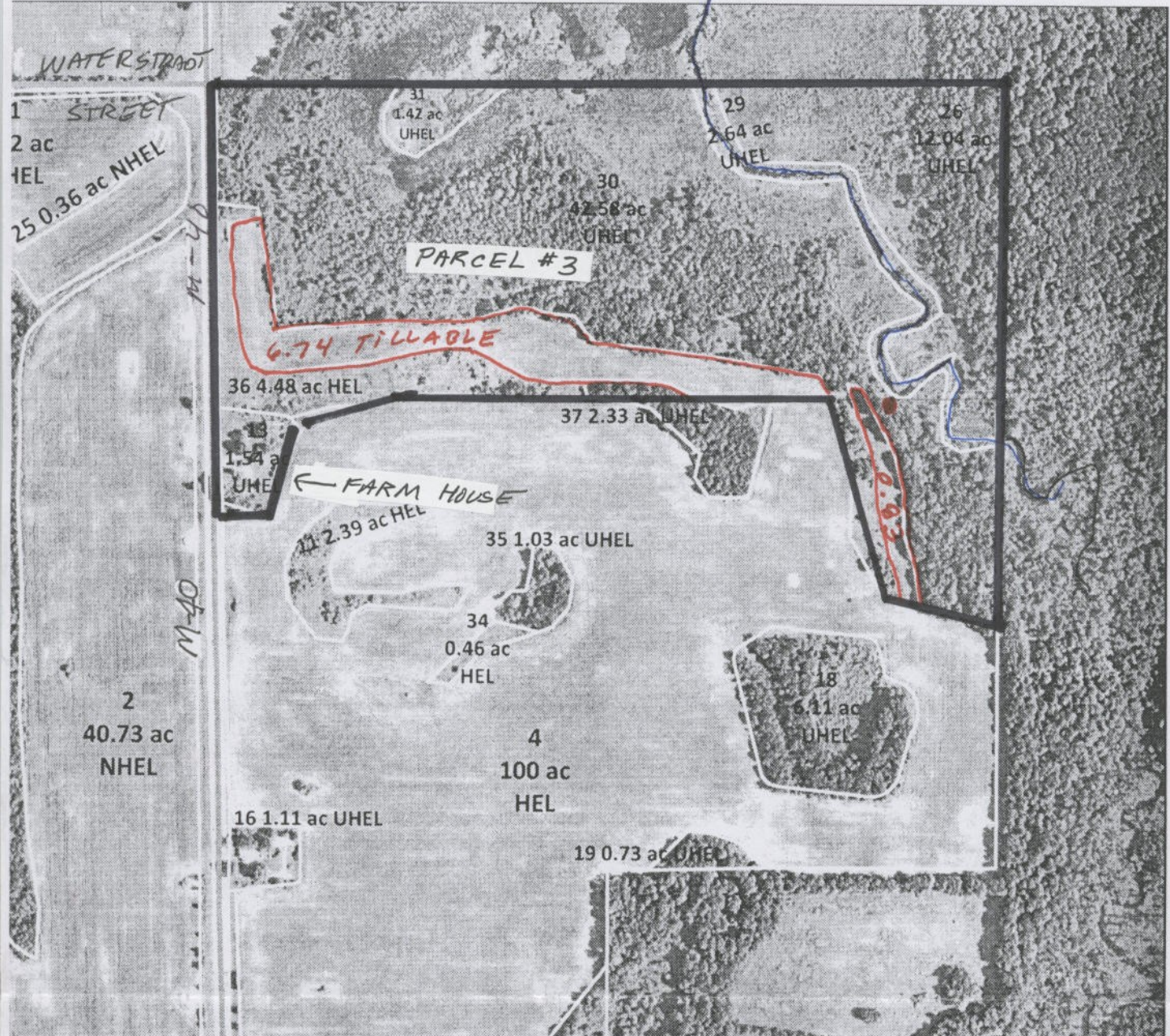
Sketch ONLY- NOT A SURVEY: Proposed property lines are general drawings until surveyed.

All approximates or Estimates:
 73+/- Total Acres, 7 1/2 +/- Tillable acres,

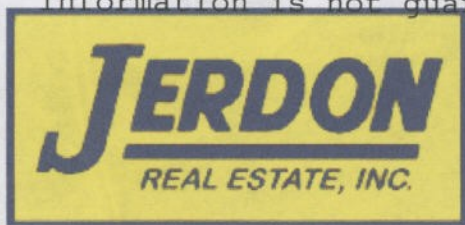
1/4 Mile[±] frontage on Rocky River.
 Farm Lease runs through 2013 @ \$150 p/acre p/yr & will be paid in full to Buyer at closing.

#F-3683 \$199,500

PICKEREL LAKE
 TO PICKEREL LAKE (SEVERAL MILES DOWNSTREAM)
 ● = NICE WATER LANDING.



Data & information is subject to error, withdrawal, & change. Information is not guaranteed.



Jerdon Real Estate, Inc.
 32502 M-62 West, Dowagiac, Michigan 49047
 Phone (269) 782-4000
 VISIT OUR WEBSITE WWW.JERDON.NET